

The Drovers Solar Farm

Report on Interrelationships between Projects

Prepared by: DWD

Date: June 2026

PINS reference: EN0110013

Document reference: APP/8.3 (Original)

Infrastructure Planning (Examination Procedure) Rules 2010





Contents

<u>1</u>	<u>Introduction.....</u>	<u>1</u>
1.1	Purpose of this report.....	1
1.2	Structure of this Report.....	2
<u>2</u>	<u>Overview of the Projects</u>	<u>3</u>
2.1	Introduction.....	3
2.2	Overview of the Projects.....	3
2.3	Schedule of Construction Timescales of Other Projects Considered.....	8
2.4	Summary	8
<u>3</u>	<u>Interrelationship with High Grove Solar Farm.....</u>	<u>9</u>
3.2	Cumulative Assessment	9
3.3	Collaboration	10
<u>4</u>	<u>Conclusion.....</u>	<u>13</u>

List of Appendices

<u>Appendix 1</u>	<u>14</u>
-------------------------	-----------



1 Introduction

1.1 Purpose of this report

- 1.1.1 This interrelationships report (the Report) been prepared on behalf of the Drovers Solar Farm Limited (the Applicant) to address a request from the Examining Authority (ExA) within their **Rule 6 letter [PD-006]** dated 8 April 2026.
- 1.1.2 The Drovers Solar Farm (the Scheme) is a Nationally Significant Infrastructure Project (NSIP) for the construction, operation and maintenance, and decommissioning of a solar photovoltaic (PV) electricity generating station and associated development comprising a Battery Energy Storage System (BESS), a Customer Substation and Grid Connection Infrastructure, including a new National Grid Substation. The Scheme would allow for the generation and export of over 100 megawatts (MW) Alternating Current (AC) of renewable energy, connecting into the National Electricity Transmission System (NETS) overhead line that passes through the Site. The **Location Plan [APP-007]** shows the extent of the Scheme, which is approximately 840 hectares (ha) of land within Norfolk (the Order limits).
- 1.1.3 Annex C of the Rule 6 letter identified three proposed NSIPs for the Applicant to include within this Report. These comprise other NSIPs in Norfolk submitted for examination or expected to be submitted for examination:
- Norwich to Tilbury (examination opened 10 February 2026).
 - East Pye Solar (application received by the Planning Inspectorate (PINS) on 5 March 2026).
 - High Grove Solar Farm (application expected to be submitted in October 2026).
- 1.1.4 Annex H of the Rule 6 letter sets out the requested contents of the Report as follows:
- An overview of the Proposed Development and the other NSIPs identified in Annex C, including the timings, construction phasing, grid connection and start of operation.
 - The approach taken by the Applicant to coordinate the Proposed Development with the other projects, including during the Examination.
 - A plan showing the order limits for the Proposed Development and the other projects and the locations of the main features of each, including, where applicable, solar arrays, energy storage facilities, substations, electrical cable routes, grid connection, environmental mitigation areas, temporary construction and decommissioning areas, and construction haulage routes.
 - The Development Consent Order provisions required for the Proposed Development to be implemented satisfactorily in relation to other projects.
 - Mitigation measures shared with other projects, the specific measures included in those for the Proposed Development, and how they are secured.



-
- Any other information on the other projects relied on for the cumulative impact assessment, the level of detail, and any changes since the application.
 - A summary of the matters coordinated with the other projects, setting out the matters that have been agreed, any inconsistencies or outstanding matters, and the next steps to be taken to resolve them.

1.1.5 This Report discusses the above matters where relevant and, as requested by the ExA, will be updated as the examination progresses as necessary.

1.2 Structure of this Report

1.2.1 In line with the requirements in Annex H of the Rule 6 letter, this Report comprises the following sections.

- **Section 2** provides an overview of the relevant applicants for the NSIPs and the potential inter-relationships between them and the Scheme.
- **Section 3** outlines further the interrelationship between the Scheme and High Grove Solar Farm, including areas of coordination, relevant mitigation measures, cumulative considerations and DCO provisions.



2 Overview of the Projects

2.1 Introduction

2.1.1 This section provides an overview of the relevant projects identified by the ExA within the Rule 6 letter, which comprise the Norwich to Tilbury Project; East Pye Solar; and High Grove Solar Farm. It provides an overview of the inter-relationships between these projects and the Scheme. Table 1 provides a summary of these details.

2.2 Overview of the Projects

Norwich to Tilbury

2.2.1 The Norwich to Tilbury Project is a proposal by National Grid Electricity Transmission Plc (NGET) for reinforcement of the transmission network between the existing Norwich Main Substation in Norfolk and Tilbury Substation in Essex, via Bramford Substation, the new East Anglia Connection Node (EACN) Substation and the new Tilbury North Substation. The examination for Norwich to Tilbury opened on 10 February 2026.

2.2.2 The Norwich to Tilbury Project is located in the ceremonial counties of Norfolk, Suffolk and Essex and the unitary authority of Thurrock. The northernmost extent of this project comprises the connection with the existing Norwich Main Substation in the district of South Norfolk. The project extends south through the districts of South Norfolk, Mid Suffolk, Babergh, Colchester and through to Tendring, where the new EACN substation would be constructed. From the EACN substation, the project crosses back into Colchester and then continues south through Braintree, Chelmsford, Basildon, Brentwood and into Thurrock, connecting into the existing Tilbury Substation.

2.2.3 As shown in the Interrelationships Overview Plan 1 within **Appendix 1**, the Norwich to Tilbury Project is a significant distance from the Scheme at approximately 37 kilometres (km). Due to this distance, the Norwich to Tilbury Project is not included within the cumulative assessment for the Scheme, as outlined within **ES Appendix 2.4: Cumulative Schemes [APP-136]**.

2.2.4 The Applicant would note that the Scheme is also not included within the Norwich to Tilbury Project 'Report on Interrelationship with Other Infrastructure Projects', which is document reference [REP4-296] of that examination, dated May 2026.

2.2.5 As detailed within Table 2 below, it is anticipated that the construction phase for the Norwich to Tilbury Project, if consented, would run between 2027 – 2031. As outlined within Section 2.3, it is anticipated that the earliest the construction phase for the Scheme would commence would be Q3 2031. It is therefore expected that there would be minimal overlap between the peak construction activities of the Scheme and the Norwich to Tilbury Project.



- 2.2.6 Due to the distance between the two applications and the lack of potential for interrelationship, the Applicant has not considered it necessary to engage with NGET in the pre-application stage for the Norwich to Tilbury Project. Likewise, NGET has not reached out to the Applicant as part of their development process.
- 2.2.7 Given the considerable distance between the Scheme and the Norwich to Tilbury Project, and the minimal construction period overlap, it is considered that the inter-relationship between the two are limited.

East Pye Solar

- 2.2.8 East Pye Solar comprises the construction, operation and maintenance, and decommissioning of a solar PV electricity generating station with a total capacity exceeding 100 MW and associated development including a BESS, up to three 132kV Project Substations and up to three 400kV Project Substations, Grid Connection Infrastructure and a new National Grid Substation.
- 2.2.9 The order limits for that project are located entirely within the administrative boundary of South Norfolk Council and Norfolk County Council and comprise 1,212.3 ha of land.
- 2.2.10 The landscape within and surrounding the ten sites for that project comprises predominantly agricultural fields and rural villages and hamlets. Sites 1 and 2 are located southeast of Great Moulton. Site 3 is located south of Lundy Green. Sites 4 and 5 are northeast of Long Stratton. Site 6 is east of Hempnall. Site 7 is located to the east of Tasburgh, north of Hempnall and south of Saxlingham Nethergate. Sites 8 and 9 are southwest of Brooke. Site 10 is northeast of Woodton.
- 2.2.11 The Applicant notes that East Pye Solar project is being promoted by Island Green Power (the parent company of the Applicant for this Scheme), and therefore there has been ongoing engagement between East Pye Solar and the Scheme as a result of this.
- 2.2.12 As shown on the Interrelationships Overview Plan 1 within **Appendix 1**, East Pye Solar is a considerable distance from the Scheme (approximately 40km). Although East Pye Solar is included within the cumulative assessment for the Scheme, within **ES Appendix 2.4: Cumulative Schemes [APP-136]** (given it is another solar energy DCO within Norfolk), at 40km from the Order limits it is outside of the 25 km Zone of Influence (Zol). As outlined within **ES Appendix 2.4: Cumulative Schemes [APP-136]**, the worst-case Zol for each environmental topic area is identified based on the extent of likely significant effects in line with industry specific guidance along with professional judgement and knowledge of the local area.
- 2.2.13 The Scheme's cumulative assessment shows that cumulative effects with East Pye Solar are very limited. As outlined within the **Planning Statement [APP/5.5.1]**, the only significant adverse cumulative effects of the Scheme with East Pye Solar are with regard to best and most versatile agricultural land at the decommissioning phase.



2.2.14 As shown on Table 2, subject to being granted consent, the construction of East Pye Solar is anticipated to commence in 2028, for a period of approximately 24 months. On this basis, it is expected that East Pye Solar could be constructed by 2030 and energised in 2031. As outlined within Section 2.3, it is anticipated that the earliest the construction phase for the Scheme would commence would be Q3 2031. It is therefore expected that there would be no overlap between the construction periods of the Scheme and East Pye Solar.

2.2.15 Given the considerable distance between the Scheme and East Pye Solar, the limited inter-project effects and the lack of construction period overlap, it is considered that the inter-relationship between the two are limited.

High Grove Solar Farm

2.2.16 High Grove Solar Farm is a solar farm with a proposed capacity of up to 720 MW. It comprises five distinct panel areas covering an area of approximately 1700ha, including solar PV panels, underground cabling, on-site BESS, and associated infrastructure including substations and environmental mitigation and enhancement areas. High Grove Solar Farm will also include underground cable corridors, which are still being refined, connecting the panel areas to one another. High Grove Solar Farm has a grid connection agreement with NGET to export electricity through a new substation; the exact location is still to be determined. This substation will be consented and built by NGET at a later date.

2.2.17 Statutory consultation took place between Thursday 24 May and Thursday 12 June 2025. The application is expected to be submitted in October 2026.

2.2.18 As shown within the Interrelationships: the Droves and High Grove- Plan 2 within **Appendix 1**, at present, High Grove Solar Farm lies adjacent to the Scheme, and there is a small section of overlap between the southernmost area of the Scheme's Order limits, and the Order limits for High Grove Solar Farm's indicative underground cable route corridor. Furthermore, as shown on Interrelationships: the Droves and High Grove Construction Compounds and Accesses Plan 4 within **Appendix 1** there is overlap between the High Grove Solar Farm construction route and the Scheme's construction route, which both use the A1065 and A47. As a result, management measures are included by the Applicant within the **outline Construction Traffic Management Plan (oCTMP) [APP/7.7.1]**. These are discussed further in section 4 of this Report.

2.2.19 As a result of the proximity between the two applications, engagement between the Scheme and High Grove Solar Farm has been ongoing since September 2024, including discussions with regards to minimising potential cumulative effects, and where the potential for inter-project benefits may be possible.

2.2.20 As shown within Table 2, subject to being granted consent, the construction of High Grove Solar Farm is anticipated to commence in 2029 with construction lasting until 2031. The project has been assumed to energise in line with their grid connection date in 2031. By this point, all construction activities would have finished. As outlined within Section 2.3, it is anticipated that the earliest the construction phase for the Scheme would commence would



be Q3 2031. As a result, there would not be a substantial overlap in peak construction activities between the Scheme and High Grove Solar Farm.

2.2.21 Given the proximity of the Scheme and High Grove Solar Farm and the potential for cumulative effects, the Applicant has considered that the inter-relationship between the two projects further in section 3 of this Report.



Table 1: List of Projects considered in this Report

Project Name and Reference	Type of Application	Local Planning Authority	Considered in the Scheme's Environmental Impact Assessment (EIA) Cumulative Effects Assessment	Stage of Application	Preliminary Environmental Information Report (PEIR) Available	ES Available	Distance to the Order limits	Construction Time Period
Norwich to Tilbury (EN020027)	Reinforcement of the transmission network between the existing Norwich Main Substation in Norfolk and Tilbury Substation in Essex, via Bramford Substation, the new EACN Substation and the new Tilbury North Substation.	Norfolk County Council; Suffolk County Council; Essex County Council; South Norfolk; Mid Suffolk District Council; Babergh District Council; Colchester City Council; Tendring District Council; Braintree District Council; Chelmsford City Council; Brentwood Borough Council; Basildon Borough Council; and Thurrock Council	No	Examination	Yes	Yes	Approximately 37 km southeast	Approximately 2027-2031
East Pye Solar (EN0110014)	Solar PV electricity generating station and associated development.	South Norfolk Council and Norfolk County Council	Yes	Pre-examination	Yes	Yes	Approximately 40 km southeast	Approximately 2028 - 2030
High Grove Solar Farm (EN0110010)	Installation of solar PV generating panels and associated development.	Breckland Council and Norfolk County Council	Yes	Pre-application stage	Yes	No	Adjacent	Approximately 2029 - 2031



2.3 Schedule of Construction Timescales of Other Projects Considered

- 2.3.1 The indicative construction programme for the Scheme is set out in **ES Chapter 5: The Scheme [APP/6.1.2]**. Subject to obtaining development consent, the construction phase will be up to 24 months. The final programme will be dependent on the detailed layout design and potential environmental constraints on the timing of construction activities. However, the Scheme is anticipated to energise in Q4 2033, or as early as NGET are able to offer. Based on Q4 2033 energisation, it is anticipated that the earliest the construction phase would commence would be Q3 2031. There is likely to be a pre-construction period preceding the construction phase of approximately six months (Q1 and Q2 2031) to allow for site preparation works.
- 2.3.2 As outlined within Section 2.2, it is expected that there would be minimal overlap between the peak construction activities of the Scheme with the Norwich to Tilbury Project or High Grove Solar Farm. Furthermore East Pye Solar is expected to be constructed by 2030 and therefore no construction overlap is expected.
- 2.3.3 Table 2 below provides a summary timeline of each project, illustrating the possible (and, as shown, minimal) construction phase overlap with the Scheme that could potentially lead to cumulative effects.

Table 2: Indicative Construction Programme for Projects considered for Potential Interrelationships

	Construction timelines (approximates)							
	2026	2027	2028	2029	2030	2031	2032	2033
The Drovers Solar Farm								
High Grove Solar Farm								
Norwich to Tilbury								
East Pye Solar								

2.4 Summary

- 2.4.1 For the reasons set out in the above assessment with regards to proximity, potential for inter-project effects, and the minimal construction period overlap, the Applicant does not consider that there is potential for inter-relationship between East Pye Solar, the Norwich to Tilbury Project and the Scheme. As such, the rest of this report will focus on the interrelationship with High Grove Solar Farm.



3 Interrelationship with High Grove Solar Farm

- 3.1.1 As set out above, due to the proximity of the Scheme and High Grove Solar Farm, the Applicant has provided further detail on the potential for interrelationships between the two projects in the section below, including likelihood of cumulative effects and collaboration that has taken place to date.
- 3.1.2 As shown within Interrelationships: the Drovers and High Grove- Plan 2 within **Appendix 1**, High Grove Solar Farm lies adjacent to the Scheme, and there is a small section of overlap between the southernmost area of the Scheme's Order limits, and the Order limits for High Grove Solar Farm's indicative underground cable route corridor. The Scheme design, as submitted as part of the DCO Application, has been designed in line with the Rochdale Envelope approach as shown on the **Works Plan [APP-009]** and shows the option for solar development for the Scheme across the entire overlap area (Interrelationships Plan 3 within **Appendix 1**). The final details of the design will be secured through the requirements of the **draft DCO [APP/3.1.1]** and will be designed taking into account High Grove Solar Farm, if consented. The Applicant will ensure that they work with High Grove Solar Farm to co-ordinate the details of the final design in line with Principle 5.8 of the **Design Approach Document [AS-009 to AS-011]**.

3.2 Cumulative Assessment

- 3.2.1 As part of the EIA process for the Scheme, interrelationships with other projects were inherently assessed within the cumulative effects assessment of each topic chapter of the ES. **ES Appendix 2.4: Cumulative Schemes [APP-136]** details the methodology used to choose the short list of projects which were assessed in the ES, which included High Grove Solar Farm.
- 3.2.2 The **Planning Statement [APP/5.5.1]** provides a summary of the significant cumulative effects of the Scheme and identifies some residual adverse and beneficial significant effects with High Grove Solar Farm. The adverse effects are as follows:

Landscape and Visual

- E6: North Pickenham Plateau LCA: there are significant adverse effects across all phases of the Scheme with High Grove Solar Farm.
- VRG4: Great Palgrave and Little Palgrave: there are significant adverse effect for users of Public Right of Way (PRoW) Sporle with Palgrave BR5 across the construction and decommissioning phases of the Scheme with High Grove Solar Farm.



Noise and Vibration:

- The Off Barn: there are significant adverse effects across the operational phase of the Scheme cumulatively with High Grove Solar Farm. However, the cumulative effects assessment concludes that it is likely that noise levels can be controlled through the implementation of additional mitigation measures to suitable levels at ‘The Off Barn’ receptor when considered cumulatively with the neighbouring High Grove Solar Farm, such that residual levels would represent at most a minor impact, which is considered not significant, in EIA terms. Mitigations for this effect is discussed further in this section of the Report.

Soils and Agriculture:

- Best and Most Versatile (BMV) Land: there are significant adverse effects across the decommissioning phase of the Scheme cumulatively with High Grove Solar Farm, East Pye Solar, Norfolk Vanguard Offshore Windfarm onshore elements and Norfolk Boreas Offshore Windfarm onshore elements.

Beneficial Impacts:

- 3.2.3 The assessment of likely cumulative effects, provided in each of the ES topic chapters, concludes the following significant residual beneficial impacts:
- Socio-Economics: Provision of education, skills and training: there are significant beneficial effects across all phases of the Scheme cumulatively with High Grove Solar Farm.
 - Human Health: Provision of education, skills and training for the general population: there are significant beneficial effects across the construction phase of the Scheme cumulatively with High Grove Solar Farm.
- 3.2.4 It is considered that, given no new information has been prepared by High Grove Solar Farm since the submission of the DCO Application for the Scheme in November 2025, the above cumulative assessment conclusions remain unchanged.
- 3.2.5 The Applicant intends to continue to update its cumulative assessment, including in collaboration with High Grove Solar Farm, throughout the examination process as any relevant project updates or new information arises.

3.3 Collaboration

- 3.3.1 The Applicant and High Grove Solar Farm have worked collaboratively to minimise the cumulative impacts associated with the two applications, whilst maximising the benefits and introducing consistency across the applications. Both parties are of the view that joint working is an example of best practice within the energy industry, showing what can be achieved when separate developers work together towards common goals.



- 3.3.2 This principle of collaboration has been established through meetings between the Applicant and High Grove Solar Farm, taking place since September 2024, and was outlined in the Scheme’s PEIR published in May 2025 where discussions on joint enhancements were noted. It is of note that Principle 5.8 of the **Design Approach Document [AS-009 to AS-011]** is to ‘Collaborate with High Grove Solar’.
- 3.3.3 As a result of meetings during the pre-application stage of the Scheme with High Grove Solar Farm, the Applicant has included the below design changes and commitments within its DCO Application.

Permissive Paths and Landscape Enhancements

- 3.3.4 One proposed joint enhancement, which has emerged from discussions between the two parties, is connecting new permissive paths between the projects.
- 3.3.5 Specific measures focus on the creation of permissive paths to the southeast of the Scheme’s Order limits, linking to off-site permissive paths associated with High Grove Solar Farm to achieve a continuous permissive path referred to as the “Swaffham Link” between Swaffham, South Acre, the Nar Valley and surrounding villages. Proposed permissive paths to link with High Grove Solar Farm are shown on the **Appendix 1 – Green Infrastructure Parameter Plan** to the **outline Landscape and Ecological Mitigation Plan (oLEMP) [APP/7.11.1]**.
- 3.3.6 The **oLEMP [APP/7.11.1]** also seeks to ensure a cohesive and linked up landscaping approach between the two projects. It sets out how planting mixes would be reviewed post consent, and in collaboration with planting proposals for High Grove Solar Farm, to ensure that there is a smooth transition of the ‘look and feel’ between one solar farm and the other.

Construction Traffic and Management

- 3.3.7 The Applicant has also committed to engage with High Grove Solar Farm, should both projects be granted consent, with regards to management of construction traffic.
- 3.3.8 Paragraph 5.15.2 of the Scheme’s **oCTMP [APP/7.7.1]** details that if the construction periods for High Grove Solar Farm and the Scheme overlap, a joint detailed CTMP could be produced. This would set out construction traffic management and control measures relevant to those areas where the construction vehicle routes for the projects overlap, to reduce and manage any potential cumulative effects.
- 3.3.9 The **oCTMP [APP/7.7.1]** also includes a commitment to a Traffic Management Working Group (TMWG) who will discuss and review the mitigation measures proposed in the detailed CTMP and suggest remedial measures if required. The TMWG will consist of the Local Planning Authority, Local Highway Authorities, as well as all other Parish Councils and groups with an interest in construction. The TMWG will include any relevant committed developments that would have an overlap in construction, such as the nearby High Grove Solar Farm in the event consent is granted for that project.



- 3.3.10 Furthermore, Appendix 1 of the oCTMP includes a travel plan which commits the Travel Plan Coordinator to coordinate with any other nearby committed developments where there is overlap in construction to identify if there are opportunities to share transportation measures, such as shared shuttle services or wider car share schemes, details of which will be confirmed within the detailed version of the document once the contractor is appointed.
- 3.3.11 In addition, as outlined within the **outline Construction Environmental Management Plan (oCEMP) [APP/7.6.1]**, the Applicant will, where feasible, continue to coordinate with other projects and relevant stakeholders in order to understand and, where possible, manage cumulative labour market pressures and accommodation pressures arising from the delivery of major infrastructure projects.
- 3.3.12 Detailed versions of the **oCTMP [APP/7.7.1]**, including the travel plan at Appendix 1 and **oCEMP [APP/7.6.1]**, are in turn secured by a requirement in the **draft DCO [APP/3.1.1]**.
- 3.3.13 However, it is not anticipated that there would be a substantial overlap in peak construction activities across the two schemes, based on the information provided in the High Grove Solar Farm PEIR, as well as their expected grid connection date in 2031, at which point all construction activities would have finished. The earliest the construction phase for the Scheme would commence would be Q3 2031.

Operational Traffic Management

- 3.3.14 The **outline Operational Traffic Management Plan (oOTMP) [APP/7.9.1]** details that the Applicant will coordinate with other nearby developments, including the undertaker of the proposed High Grove Solar Farm, to ensure that replacement activities are staggered to avoid overlap in any activity peaks, where practicable.

Noise Mitigation

- 3.3.15 As detailed above, there are significant adverse effects across the operational phase of the Scheme cumulatively with High Grove Solar Farm at the Off Barn, based on the PEIR information for High Grove Solar Farm. It is acknowledged that the design of High Grove Solar Farm is likely to evolve from the PEIR information for their respective DCO Application, and there is the potential for this significant cumulative effect to reduce without the need for additional mitigation; however, the conclusions of the cumulative assessment have been made on a worst-case basis.
- 3.3.16 In response to this, the Applicant has committed within paragraph 2.5.4 of the **oCEMP [APP/7.6.1]** to collaborate with High Grove Solar Farm during the detailed design stage of the Scheme to explore mitigation measures across both projects and seek to achieve cumulative noise levels that do not exceed 35dB(A) at The Off Barn receptor during the operational phase of the Scheme.

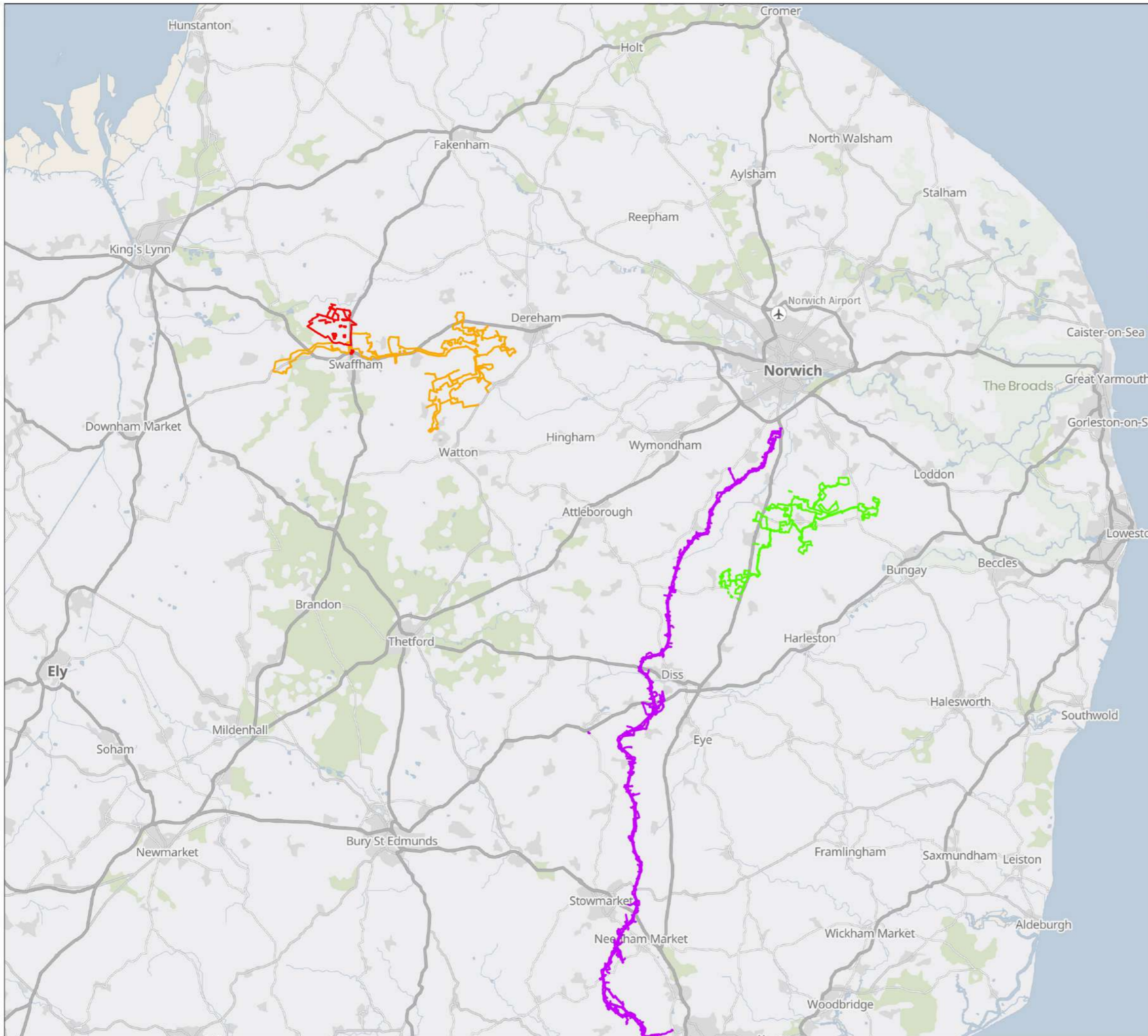


4 Conclusion

- 4.1.1 This Report has assessed the current potential for interrelationships between the Scheme and other NSIPs within Norfolk. Of these, the Applicant considers that two projects (the Norwich to Tilbury Project and East Pye Solar) are unlikely to interact with the Scheme due to their distance from the Order limits.
- 4.1.2 As a result, this Report focuses on the adjacent High Grove Solar Farm and its potential interrelationship with the Scheme.
- 4.1.3 It is considered that given no new information has been prepared by High Grove Solar Farm since the submission of the Scheme's DCO Application in November 2025, the cumulative assessment conclusions set out in the ES for the Scheme remain unchanged.
- 4.1.4 The Applicant intends to continue to update its cumulative assessment, including in collaboration with High Grove Solar Farm, through the examination process as any relevant project updates or new information arises.
- 4.1.5 The Applicant has also detailed how it has worked collaboratively to date with High Grove Solar Farm to minimise the cumulative impacts associated with both projects, whilst maximising the benefits of the projects and introducing consistency across the two applications. For the reasons outlined within the report, the Applicant do not consider any DCO provisions are necessary.
- 4.1.6 It is noted that High Grove Solar Farm is at pre-application Stage, there are likely to be project updates. Notwithstanding this uncertainty, the Applicant will continue to pursue a coordinated, transparent, and evidence-based approach to engagement, planning, and environmental management to ensure that opportunities are taken to work with High Grove Solar Farm to effectively mitigate effects, and with a view to ensuring that both applications proceed in a way that minimises adverse impacts and supports a well-managed energy transition.
- 4.1.7 As requested in the Rule 6 letter, the Applicant will continue to update this Report during examination of the Scheme as appropriate.



Appendix 1



DRAWING TITLE:
Interrelationships Overview - Plan 1

DOCUMENT:
Interrelationships Report

- LEGEND:
- The Droves - Order Limits
 - High Grove Solar - Draft Order Limits
 - East Pye - Order Limits
 - Norwich to Tilbury - Order Limits (Only part shown due to plan extent)

Infrastructure Planning (Examination Procedure) Rules 2010
PINS Reference: EN0110013
Sources: Island Green Power, Ordnance Survey, National Grid, IGP UK, RWE



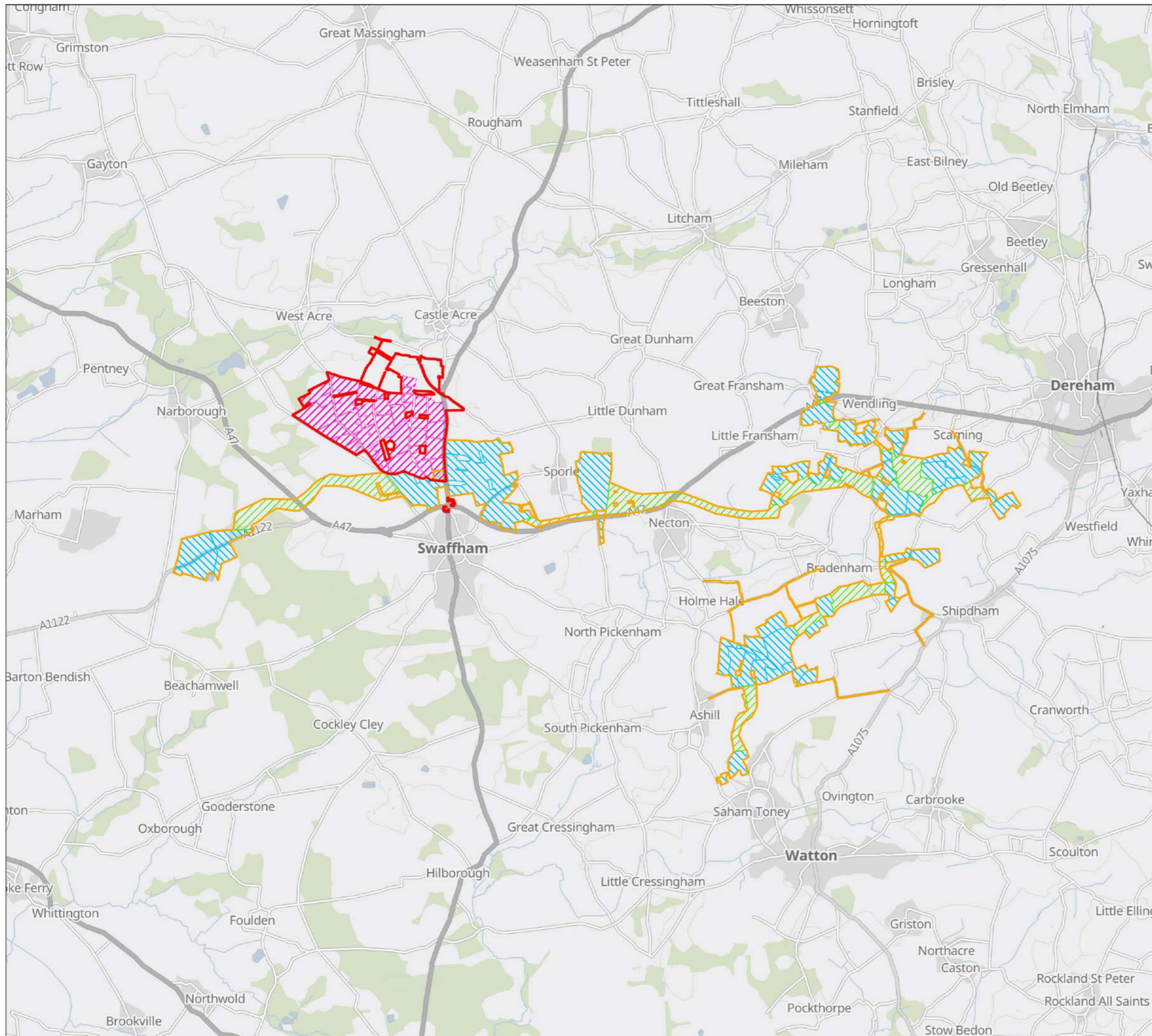
DWG. NO. 9485_Interrelationships_Plan_001

DATE	May 2026	DRAWN	AWa
SCALE @A3	1:350,000	CHECKED	RPi
STATUS	Final	APPROVED	RPi

No dimensions are to be scaled from this drawing.
All dimensions are to be checked on site.
Area measurements for indicative purposes only.
THIS DRAWING IS THE PROPERTY ISLAND GREEN POWER AND NO REPRODUCTION MAY BE MADE IN WHOLE OR IN PART WITHOUT PERMISSION



LDĀDESIGN

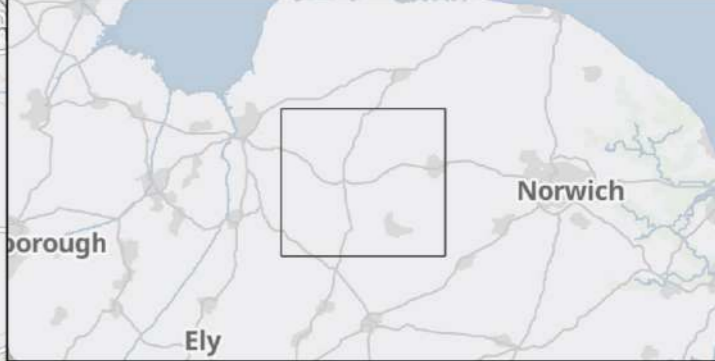


DRAWING TITLE:
Interrelationships: the Droves and High Grove - Plan 2

DOCUMENT:
Interrelationships Report

- LEGEND:
- The Droves - Order Limits
 - High Grove Solar - Draft Order Limits
 - The Droves - Solar PV Site
 - High Grove Solar - Cable Corridors
 - High Grove Solar - Panel Areas

Infrastructure Planning (Examination Procedure) Rules 2010
 PINS Reference: EN0110013
 Sources: Island Green Power, Ordnance Survey, RWE



DWG. NO. 9485_Interrelationships_Plan_002

DATE	May 2026	DRAWN	AWa
SCALE @A3	1:100,000	CHECKED	RPI
STATUS	Final	APPROVED	RPI

No dimensions are to be scaled from this drawing.
 All dimensions are to be checked on site.
 Area measurements for indicative purposes only.
 THIS DRAWING IS THE PROPERTY ISLAND GREEN POWER AND NO REPRODUCTION MAY BE MADE IN WHOLE OR IN PART WITHOUT PERMISSION



The Drokes Key

- Order Limits
- Existing vegetation
- Grassland open fields and margins incorporating existing meadows, ponds and tree groups
- PV Case Area
- Solar PV modules
- Area for curlew mitigation
- Area for skylark mitigation
- Proposed access tracks

High Grove Key

- Draft Order Limits
- Existing features**
- Public Rights of Way
- Watercourses
- Woodland, trees and shrub
- High voltage overhead lines and electricity pylons
- National Trails
- Hedgerow
- Hedgerow within Draft Order Limits to be protected, retained and reinforced with gap infill planting
- Proposed features**
- Solar panels
- Hybrid packs: including inverter units, DC-DC converters and Battery Energy Storage Systems
- Switchgear
- Inverter
- Spare container
- 132kV Substation
- Fence line
- Access tracks
- Mixed native woodland planting
- Mixed native hedgerow planting
- Species rich grassland beneath solar panels
- Species rich grassland
- Proposed bird mitigation
- Permissive paths
- Construction and maintenance vehicle access points

Notes:

- The Order limits has been drawn to the Land Registry boundaries and Topographical Survey data. The accuracy of Land Registry and the topographical survey differs from the OS Base Mapping which results in the Order limits not aligning with the line work shown on the OS Base Mapping.
- This drawing comprises a sketch of submitted illustrative layouts for The Drokes Solar Farm and High Grove Solar Farm. The illustrative layouts and legends have been reproduced from those submitted, with the exception of the Order Limit symbology which has been amended to aid in the legibility of the extent of each scheme.

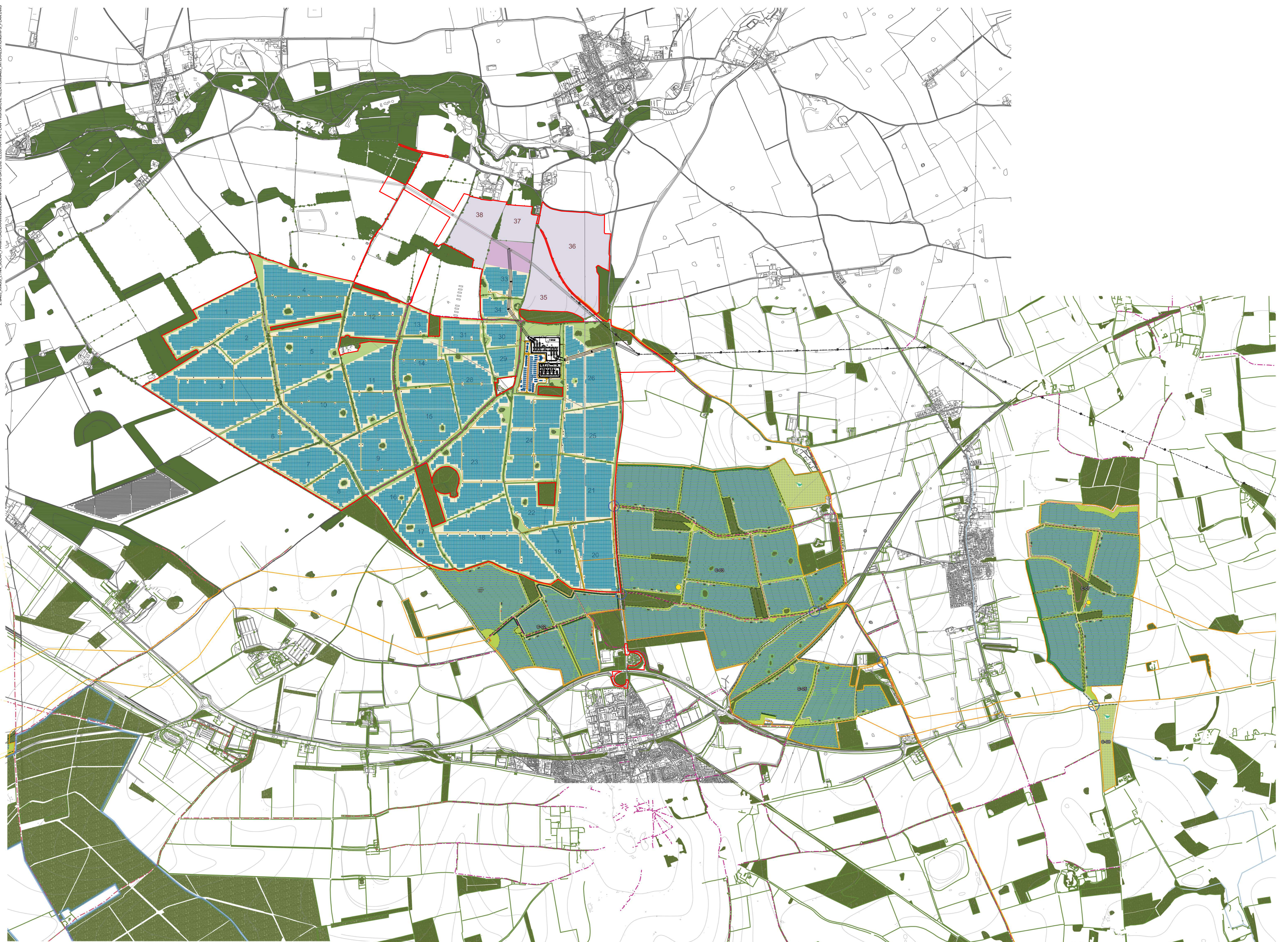
REV	DESCRIPTION	APP	DATE

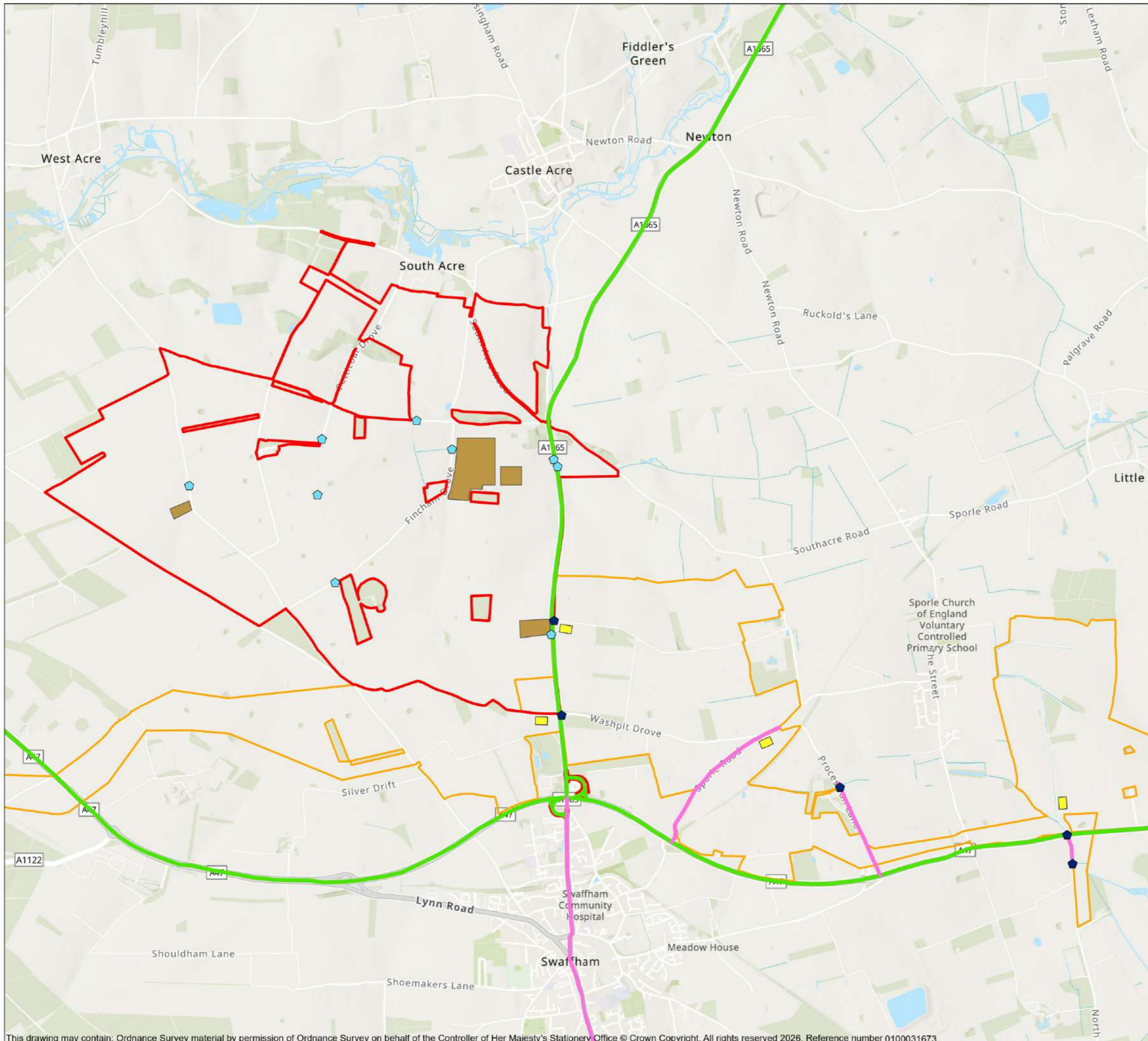
Source: Ordnance Survey (OS Licence number AC000046896)
 The Infrastructure Planning (Applications, Prescribed Forms and Procedure) Regulations 2009 – Regulation 52(v)
 PINS Ref: EN110013

DWG. NO 9485_Interrelationships_Plan_003
 Rev: P0

DATE	SCALE	DRAWN	HW
May 2026	Not to scale	CHECKED	RP
STATUS	FINAL	APPROVED	RP

No dimensions are to be scaled from this drawing.
 All dimensions are to be checked on site.
 Area measurements are for indicative purposes only.
 THIS DRAWING IS THE PROPERTY OF ISLAND-GREEN POWER AND NO REPRODUCTION MAY BE MADE IN WHOLE OR PART WITHOUT PERMISSION.



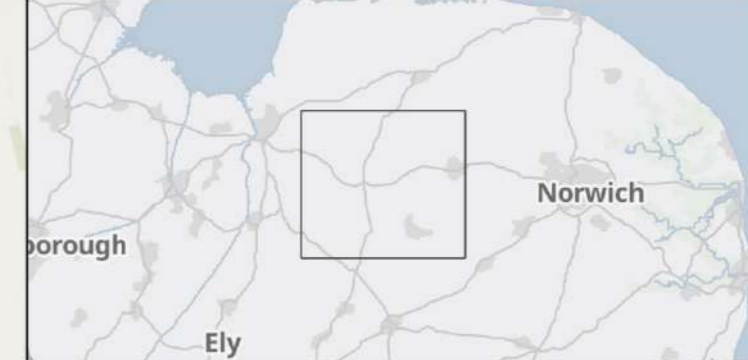


DRAWING TITLE:
Interrelationships: the Droves and High Grove Construction Compounds and Accesses - Plan 4

DOCUMENT:
Interrelationships Report

- LEGEND:
- The Droves - Access and Crossing Points
 - High Grove - Access and Crossing Points
 - The Droves and High Grove - Construction Accesses
 - High Grove - Construction Accesses
 - The Droves - Order Limits
 - High Grove - Draft Order Limits (Only part shown due to plan extent)
 - The Droves - Temporary Construction Compounds
 - High Grove - Temporary Construction Compounds

Sources: Island Green Power, Ordnance Survey, RWE



DWG. NO. 9485_Interrelationships_Plan_004

Infrastructure Planning (Examination Procedure) Rules 2010
 PINS Reference: EN0110013

DATE	May 2026	DRAWN	AWa
SCALE @A3	1:30,000	CHECKED	RPI
STATUS	Final	APPROVED	RPI

No dimensions are to be scaled from this drawing.
 All dimensions are to be checked on site.
 Area measurements for indicative purposes only.

THIS DRAWING IS THE PROPERTY ISLAND GREEN POWER AND NO REPRODUCTION MAY BE MADE IN WHOLE OR IN PART WITHOUT PERMISSION



This drawing may contain: Ordnance Survey material by permission of Ordnance Survey on behalf of the Controller of Her Majesty's Stationery Office © Crown Copyright. All rights reserved 2026. Reference number 0100031673.
 OS Open data / © Natural England / © DEFRA / © DECC / © Historic England/ © Environment Agency. Contains Ordnance Survey data. Aerial Photography - GB Background: Contains OS data © Crown Copyright and database right 2026. Contains data from OS Zoomstack
 World Hillshade: Esri, Intermap, NASA, NGA, USGS
 World Topographic Map: Sources: Esri, TomTom, Garmin, FAO, NOAA, USGS, © OpenStreetMap contributors, and the GIS User Community



THE DROVES
SOLAR FARM